



SIRENA 60



SIRENA YACHTS



 **SIRENA 60**





Her profile is timeless, yet updated. With design elements that catch the eye of shoreside observers and yet also make sense when viewed from the helm, looking out. A spacious flybridge offers a fresh perspective while bulwark cutouts enhance the view from the saloon. Fore and aft decks round out comfort with fresh breezes and a choice of sun and shade.



SALOON

The main deck saloon and galley makes time together on board a shared experience:
helm, settee, and galley are all in easy proximity to one another, making for relaxing conversation, easy entertaining, and good company.





MASTER CABIN



The subtle color scheme relaxes the mind and calms the soul upon entering the owners' suite, while its luxuriously appointed en suite completes the oasis of privacy.



The owners' suite sets the tone for the entire experience of being on board:

generous headroom, all the storage owners could need, and lighting provided by natural and manmade sources that accentuates the carefully curated textures and subtle colors of this relaxing escape.

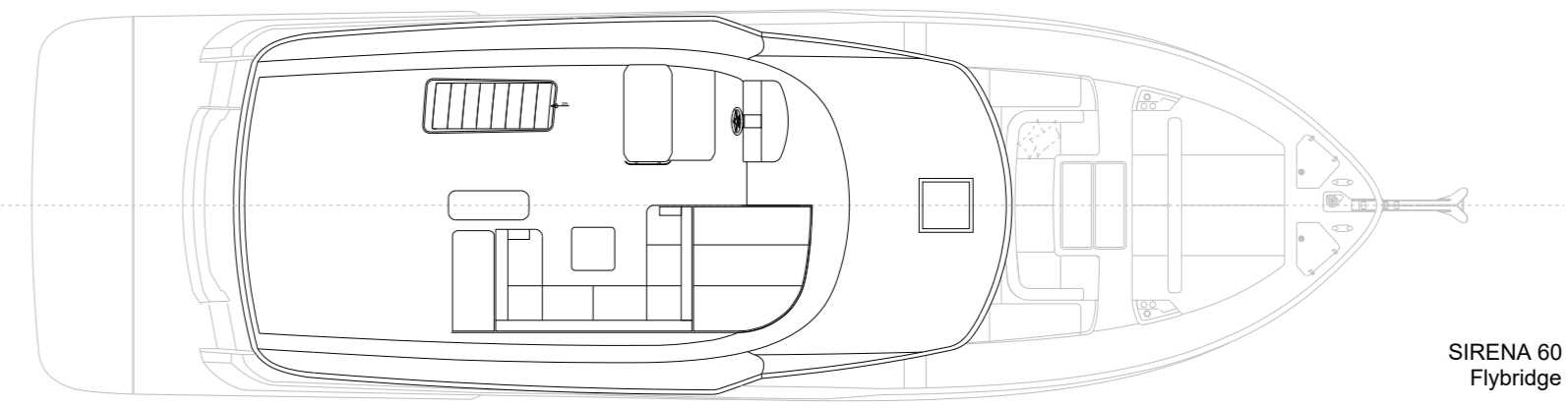


VIP

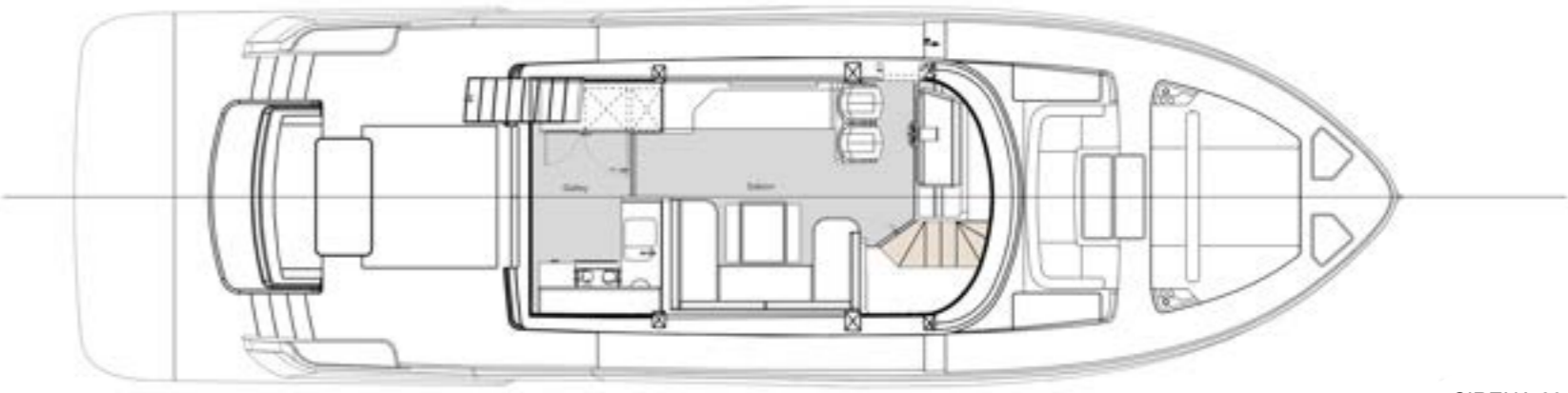


GUEST CABIN





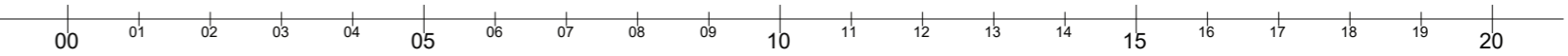
SIRENA 60
Flybridge



SIRENA 60
Main Deck



SIRENA 60
Lower Deck



Dimensions and Main Characteristics

Length Overall LOA	19,45 m / 63'8"
Hull Length	17,18 m / 56'4"
Hull Beam BHmax ISO 8666	5,36 m / 17'7"
Max Draft - TMAX ISO 8666	1,24 m / 4'1"
Cabins	3 standard + 1 (optional crew cabin)
Loaded-Displacement Mass	35,1 tonnes (with VOLVO D11) 35,9 tonnes (with VOLVO D13)
Fuel Tank Capacity	3600 lt
Hull Type	Semi Displacement
Exterior Styling Concept & Interior Design	Sirena Design Team
Naval Architecture	Frers Yacht Design
Engines	2 x VOLVO D11 670 HP 2 x VOLVO D13 900 HP
Marine Gears	ZF 325 IV
Transmission	V Drive
Max speed*	23,5 knots 25,8 knots (with optional engines)
Certification	CE Category A

*NOTE: All performance specified in the table above are design data and applies to a standard configuration boat (standard equipment installed as per this standard list) with clean keel, propellers, and rudders. Furthermore, the performance levels indicated above have been defined under good sea and wind conditions (Beaufort Scale level 1, Douglas Scale level 1, ambient T < 25°, seawater T =15°, atmospheric P = 103250 Pa) with 2 people on board, 25% fuel, and fresh, grey and black water tanks empty. Different or harsher sea conditions and additional selected optional equipment may affect the performance.





SIRENA YACHTS

TR

Turkey, Headquarters

+90 212 219 74 74

Abdi İpekçi Cad. Ada Apt. No: 22/18
K: 5 34367 Nişantaşı / İstanbul

sales@sirenayachts.com
www.sirenayachts.com

SIRENA MARINE